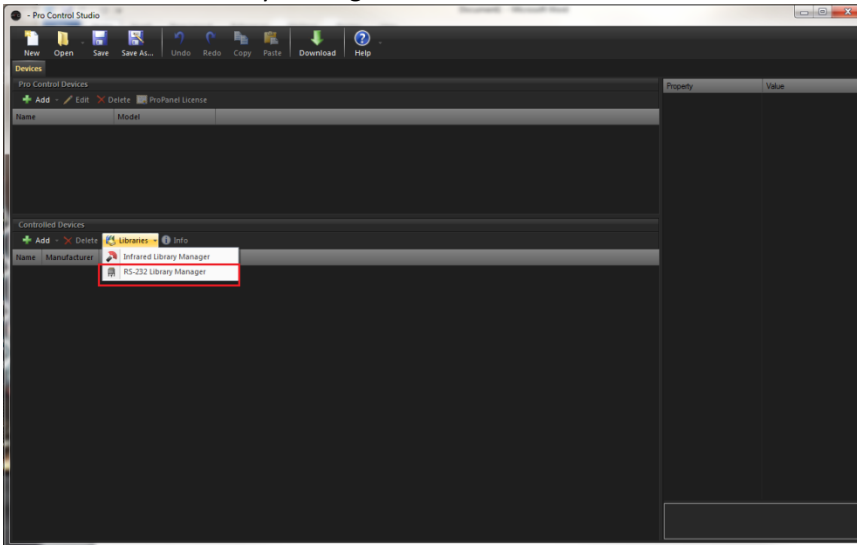
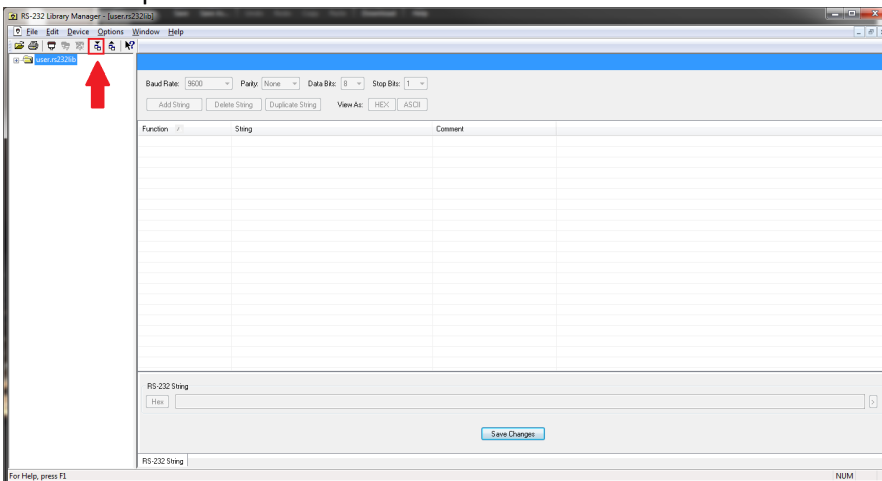


## Import and Load RS-232 Library

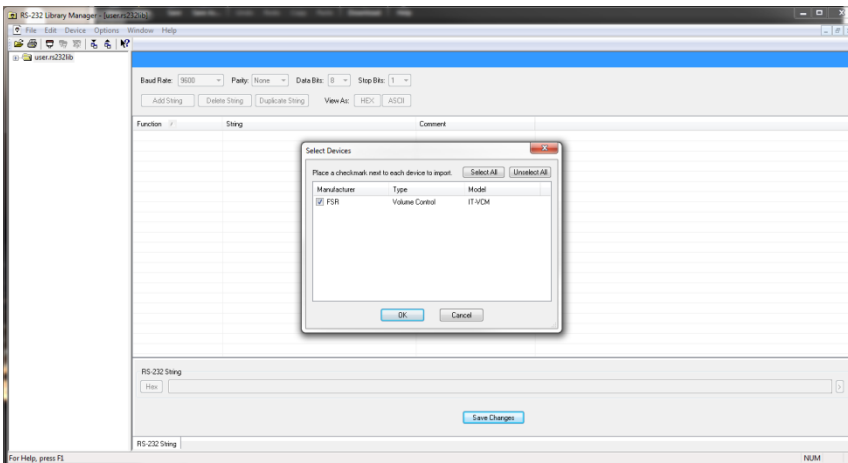
- 1) Click on RS-232 Library Manager



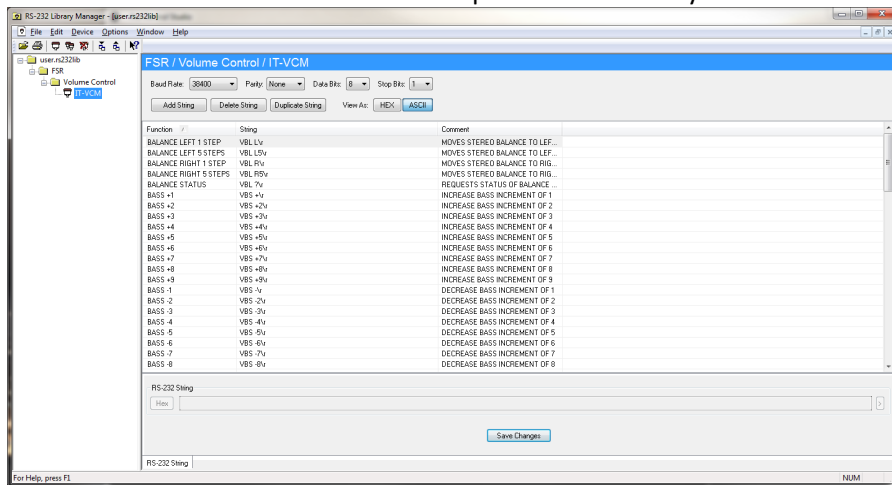
- 2) Click the Import button



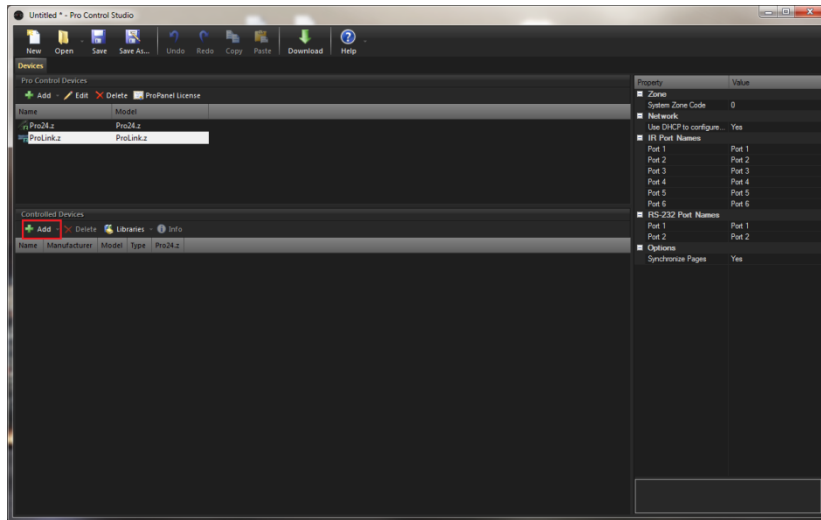
- 3) Select the file 'FSM\_IT-VCM.rs232lib' and hit 'Open'
- 4) Make sure the check box is checked and then hit 'OK'



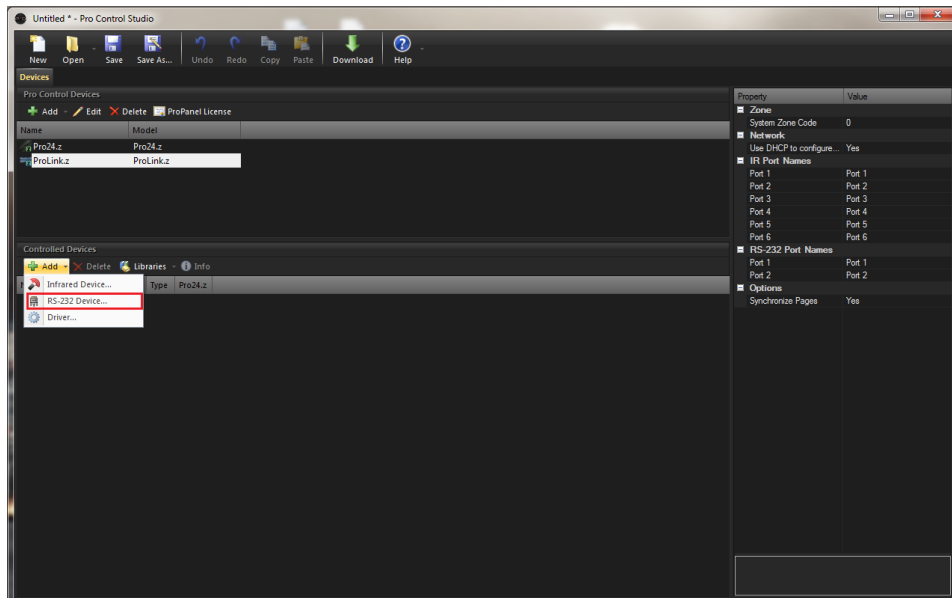
This is what it will look like after it is imported successfully



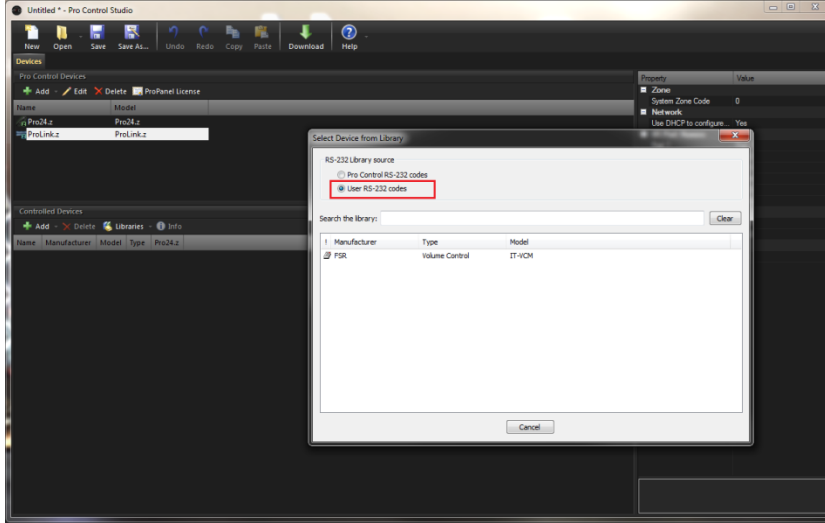
5) Click Add



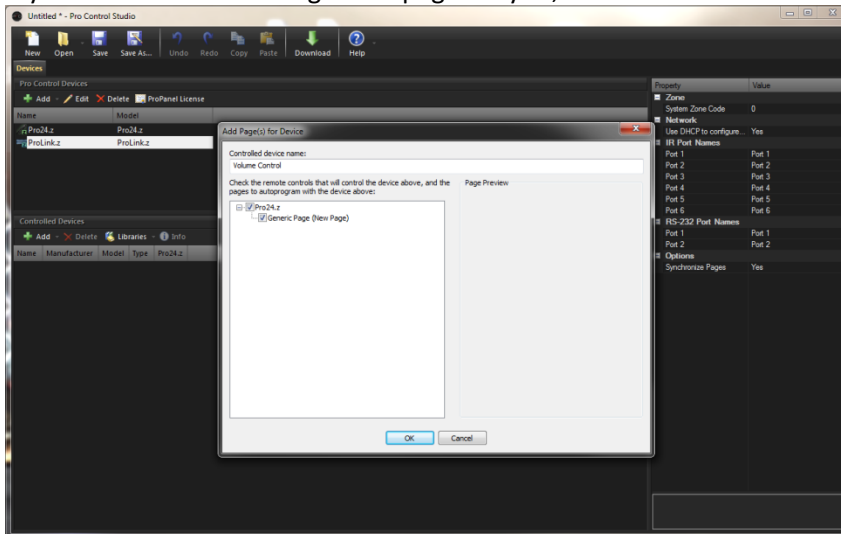
6) Select RS-232 Device...



- 7) Select the radio button for 'User RS-232 codes' and it should populate with the code you imported



- 8) If you'd like it to create a generic page for you, make sure the checkbox is selected and hit OK



- 9) Once added, you'll see it appear in your 'Controlled Devices' section of the main screen

